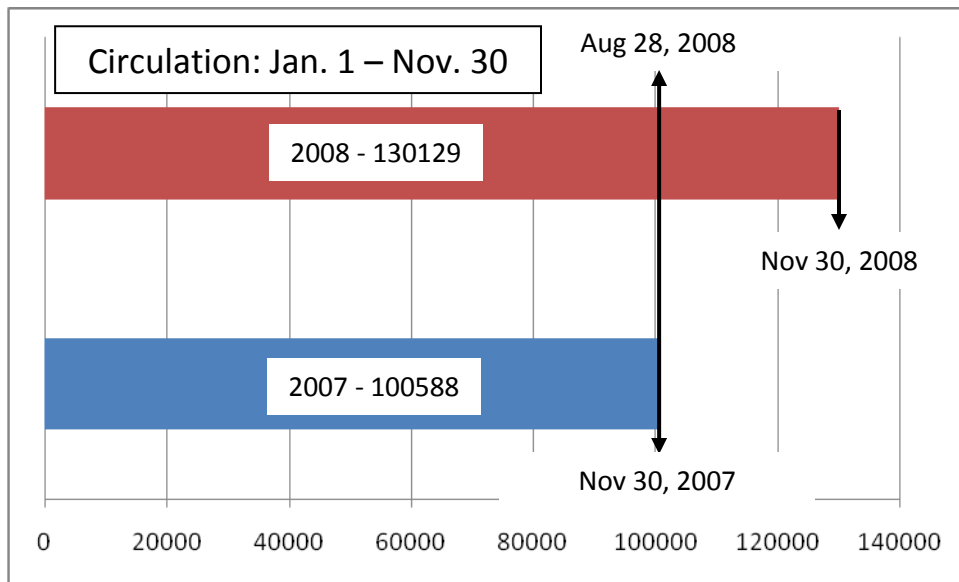
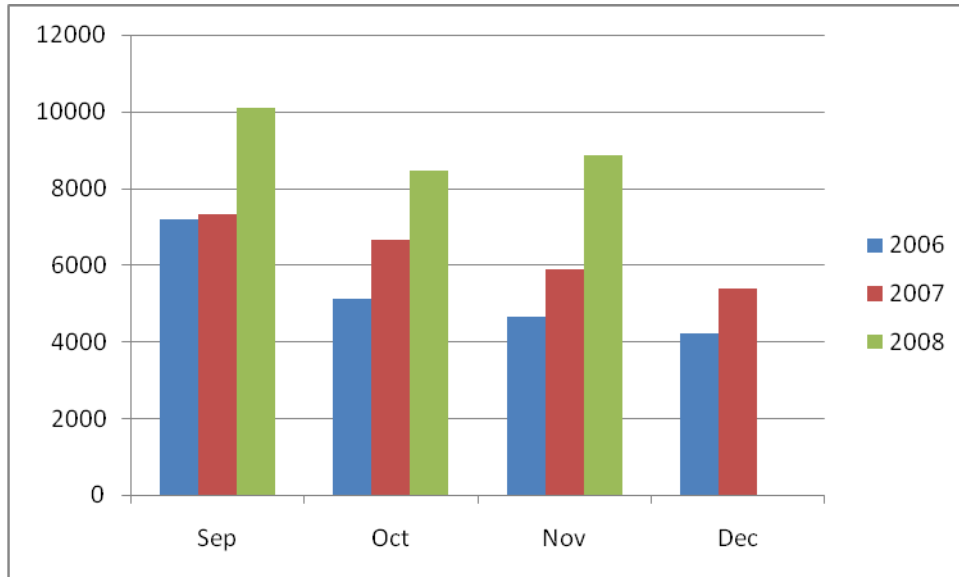


Director's Report for November 2008

November's circulation (8858) increased by 5% from October (8449), and 51% above this time last year (5867). Year-to-date (YTD) stat for the end of November (130129) was 29% above YTD figures for November 2007 (100588).



Staff members attend 2 workshops in November. Michelle and Shannon attended *Video Gaming In Libraries*. Shannon also participated in a webinar on *Library Marketing*. Linda will be completing the Drexel U. online course, *Overview of Arts Administration*, in late December.

Search for museum assistant underway. By the deadline of 5:00pm, November 21, over 80 applications were received for the museum assistant position. Interviews with the most promising candidates will occur the week of December 8.

Jed Gaylin, maestro of the Bay-Atlantic Symphony, has proposed two syphonic concerts for the third season of Symphony By The Sea. However, we have not received a formal proposal from the Bay-Atlantic.

Saturday July 18, 2009

1001 Night's Entertainment

Overture to Nabucco.....Verdi
Carmen Suite No. 1.....Bizet
Espana.....Chabrier
Bacchanal from *Samson & Delilah*.....Saint-Saens
Scheherazade.....Rimsky-Korsakov

Saturday August 22, 2009

Mozart: Villains, Heroes and Gods

Don Giovanni Overture
Piano Concerto TBA
Symphony No. 41 in C Major, K. 551, *Jupiter*

The library will be replacing our Millenium Integrated Library System (ILS) server on January 21. Additionally, we will be upgrading to a newer addition of that software. It may be necessary to close the library down on that day. As there will be no computer services available including all circulation functions. Plans are being developed with the South Jersey Regional Library to provide customer service training on that day.

The Library has received positive feedback about the Library by Mail program. Patrons say that they are pleased to have this option. Some have said that they are more likely to check out material when they are here for the weekend, knowing that they are not rushed to finish enjoying the items prior to heading home. In November, 165 library mailers were sent with an average of 2 items per bag.